



# IMPORTANT MESSAGE REGARDING THE CORONAVIRUS

(COVID-19)

As public concern over the spread of Coronavirus (COVID-19) increases, HACLA continues to closely monitor the [CDC's](#) recommendations and will provide periodic updates on any impact to HACLA's operations. As of this writing (March 5th), immediate threat to the general public is low according to the [L.A. County Public Health Department](#).

Please rely on the [Centers for Disease Control \(CDC\)](#) and [L.A. County Public Health Department](#) for guidance and recommendations. Some of these recommendations are to observe basic public health protocols including:



Stay home when you are sick.



Limit close contact with people who are sick.



Wash your hands often with soap and water for at least 20 seconds.



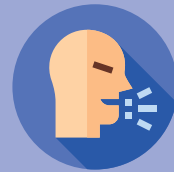
If soap and water are not readily available, use an alcohol-based hand sanitizer with at least 60% alcohol.



Clean and disinfect frequently touched objects and surfaces.



Avoid touching your eyes, nose, and mouth.



Cover your cough or sneeze with a tissue, then throw the tissue in the trash. If you do not have a tissue, use your sleeve (not your hands).

HACLA encourages all clients and stakeholders to vigilantly monitor [CDC](#) and [L.A. County Public Health Department](#) recommendations.

If you have any questions regarding the coronavirus, please visit the Los Angeles County information website <https://www.211la.org/> or call their information line 2-1-1 .

For more information from the Los Angeles County Public Health Department, please visit: <http://publichealth.lacounty.gov/media/Coronavirus/#>

For more information from the CDC, please visit: <https://www.cdc.gov/coronavirus/2019-ncov/index.html>

